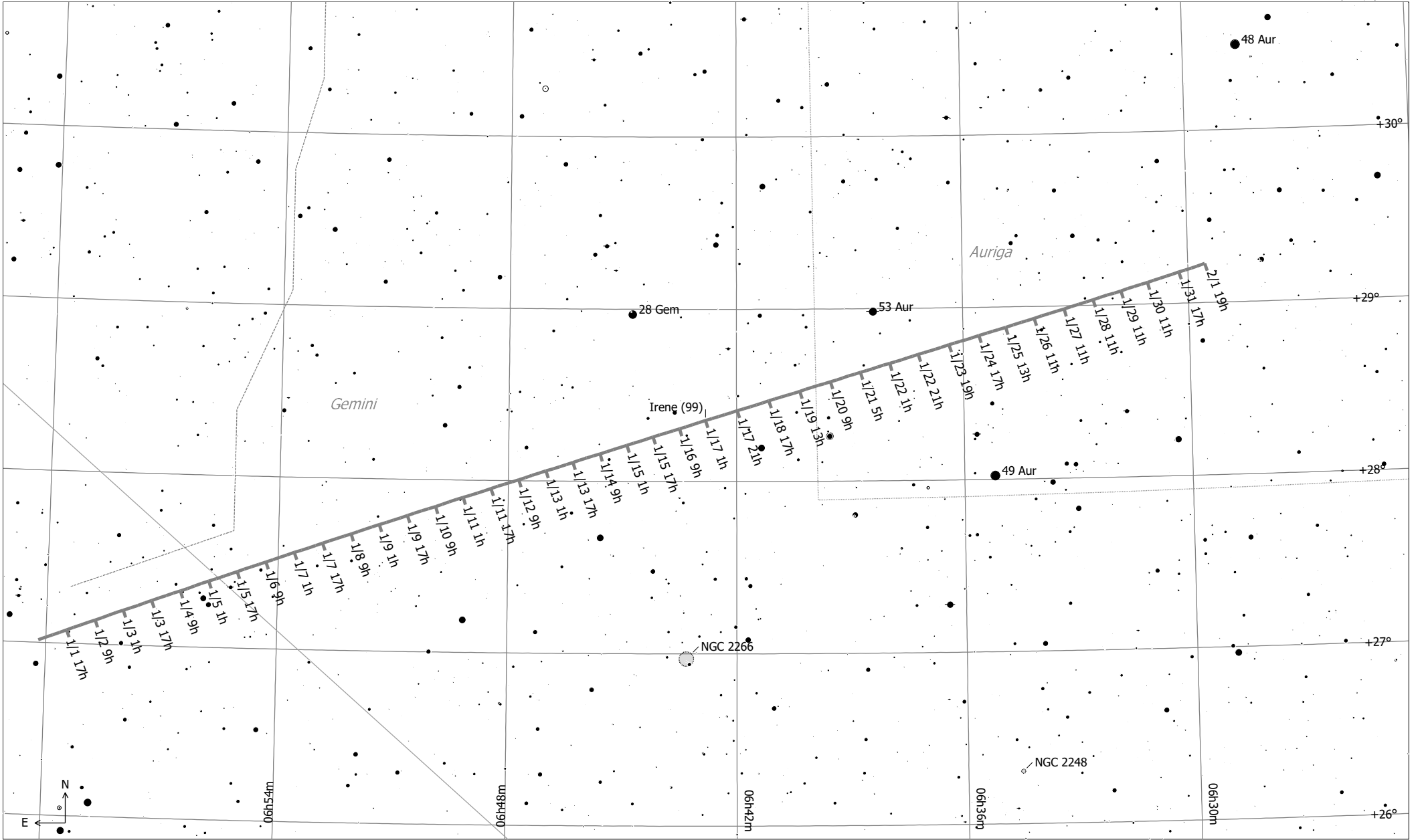


(14) Irene



(14) Irene (Minor Planet)
 Magnitude: 9.85 Earth Distance: 1.5 AU



- SN Remnant
- Ref. Neb.
- ◇ Dark Neb.
- Globule
- Open Cl.
- Globular Cl.
- × Skymark
- Mult. Star
- ☄ Comet
- Minor Planet
- Galaxy
- Galaxy Gr.
- Quasar
- Planetary
- HII Region

- 10 ● 4
- 11 ● 5
- 6
- 7
- 8
- 9

Position Ephemeris for (14) Irene

Local Date/Time	RA (2000)	Dec (2000)	Con	Rs	Re	Elon	Mag	Alt	Azm	Quality	Difficulty	Vis
2025 Jan 1 01:00	07h00m11.5s	+27°00'51"	Gem	2.46 AU	1.48 AU	175°	9.6	+72°51'	+160°49'	best	obvious	■
2025 Jan 3 01:00	06h58m00.2s	+27°12'06"	Gem	2.46 AU	1.48 AU	176°	9.6	+73°31'	+168°06'	best	obvious	■
2025 Jan 5 01:00	06h55m47.8s	+27°23'05"	Gem	2.46 AU	1.47 AU	175°	9.6	+73°57'	+175°49'	best	obvious	■
2025 Jan 7 01:00	06h53m34.8s	+27°33'44"	Gem	2.45 AU	1.47 AU	173°	9.6	+74°08'	+183°48'	best	obvious	■
2025 Jan 9 01:00	06h51m22.2s	+27°44'03"	Gem	2.45 AU	1.47 AU	171°	9.7	+74°04'	+191°49'	best	obvious	■
2025 Jan 11 01:00	06h49m10.6s	+27°53'58"	Gem	2.45 AU	1.47 AU	169°	9.7	+73°44'	+199°37'	best	obvious	■
2025 Jan 13 01:00	06h47m00.8s	+28°03'30"	Gem	2.44 AU	1.47 AU	167°	9.8	+73°10'	+207°02'	best	obvious	■
2025 Jan 15 01:00	06h44m53.4s	+28°12'35"	Gem	2.44 AU	1.48 AU	164°	9.8	+72°23'	+213°53'	best	obvious	■
2025 Jan 17 01:00	06h42m49.2s	+28°21'15"	Gem	2.43 AU	1.48 AU	162°	9.9	+71°26'	+220°08'	best	obvious	■
2025 Jan 19 01:00	06h40m48.8s	+28°29'27"	Aur	2.43 AU	1.48 AU	160°	9.9	+70°20'	+225°47'	best	obvious	■
2025 Jan 21 01:00	06h38m52.9s	+28°37'12"	Aur	2.43 AU	1.49 AU	157°	9.9	+69°06'	+230°50'	best	obvious	■
2025 Jan 23 01:00	06h37m02.0s	+28°44'29"	Aur	2.42 AU	1.50 AU	155°	10.0	+67°47'	+235°21'	best	obvious	■
2025 Jan 25 01:00	06h35m16.9s	+28°51'19"	Aur	2.42 AU	1.51 AU	152°	10.0	+66°24'	+239°25'	best	obvious	■
2025 Jan 27 01:00	06h33m37.9s	+28°57'41"	Aur	2.42 AU	1.51 AU	150°	10.1	+64°58'	+243°03'	best	obvious	■
2025 Jan 29 01:00	06h32m05.7s	+29°03'37"	Aur	2.41 AU	1.52 AU	148°	10.1	+63°30'	+246°20'	best	obvious	■
2025 Jan 31 01:00	06h30m40.6s	+29°09'07"	Aur	2.41 AU	1.53 AU	145°	10.2	+62°00'	+249°18'	best	obvious	■