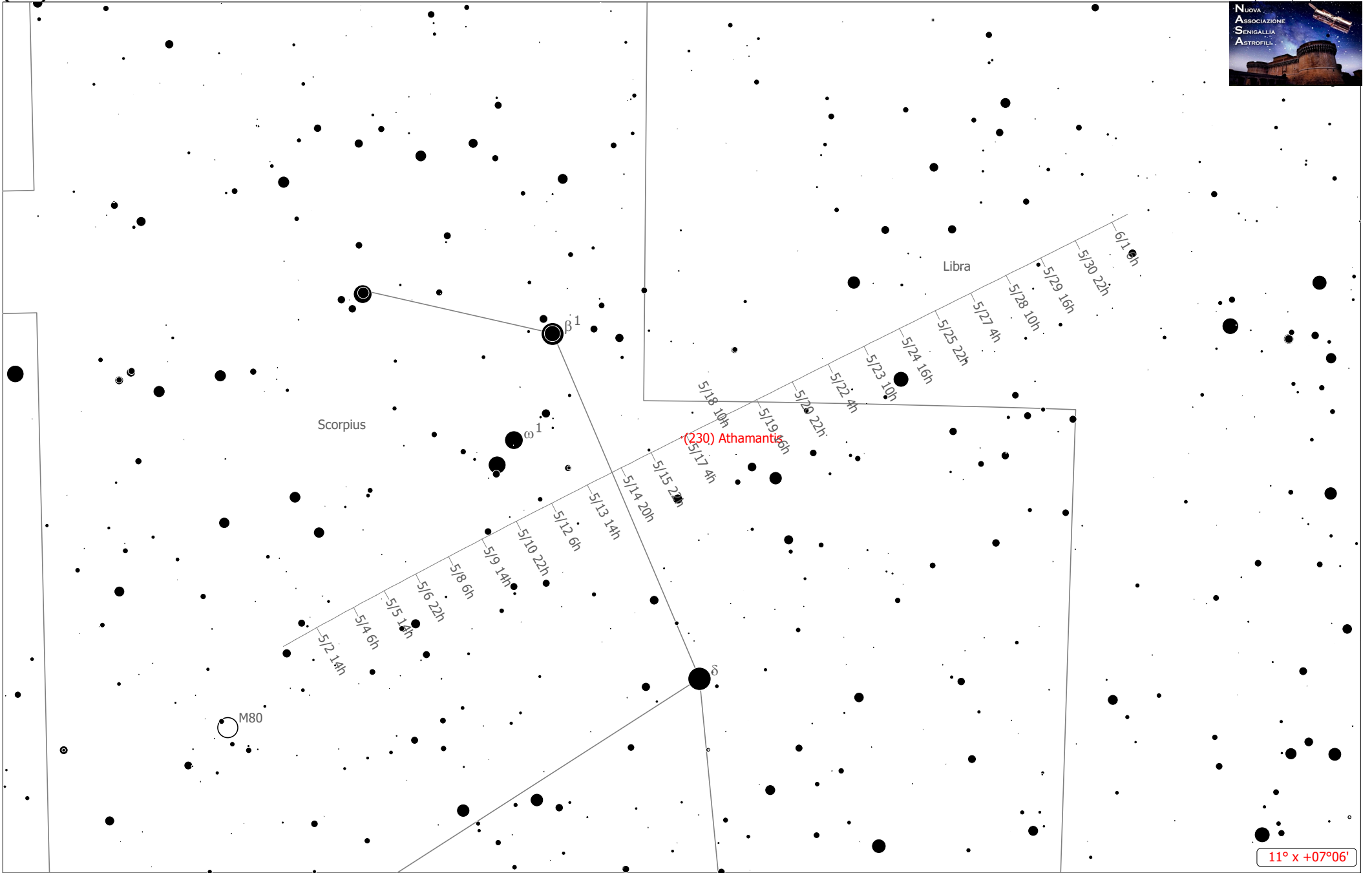


(230) Athamantis



11° x +07°06'

(230) Athamantis (Minor Planet)
 R.A.: 16h00m58.2s Dec.: -20°39'07" J2000 (Sco)

Magnitude: 10.50 Earth Distance: 1.5 AU

- Open Cl. □ Nebula ○ Galaxy Gr. ☄ Comet
- Globular Cl. ◇ Dark Neb. ○ + Quasar ○ Asteroid
- Globule ○ Planetary ○ Galaxy

